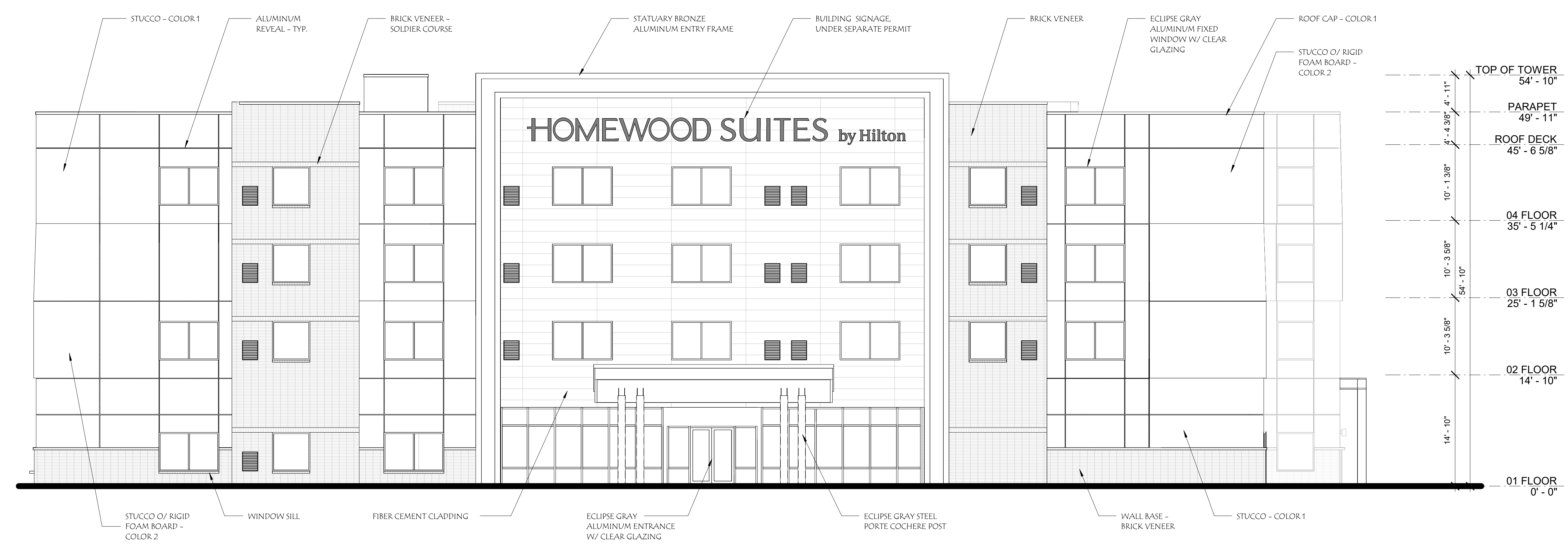
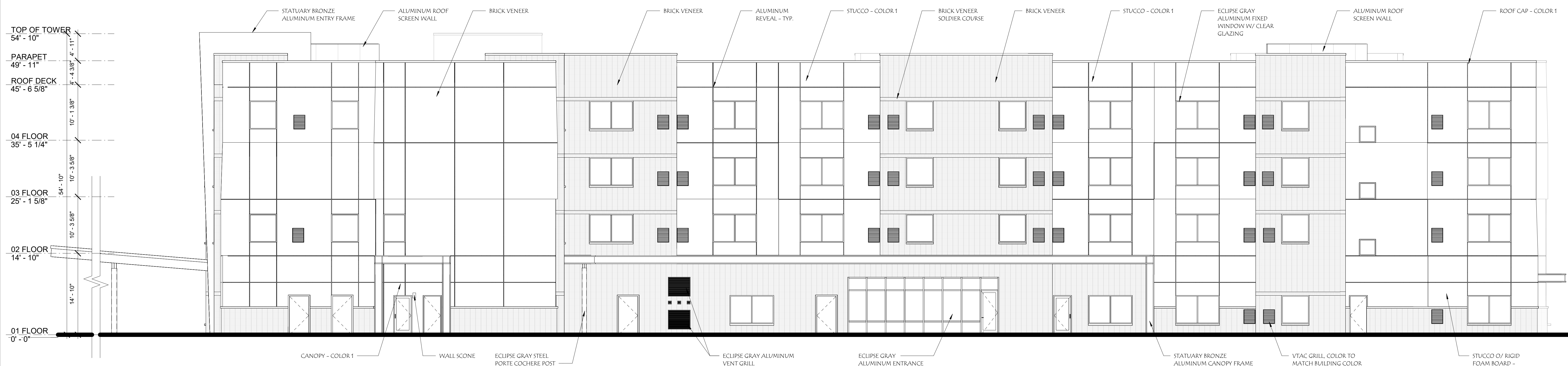


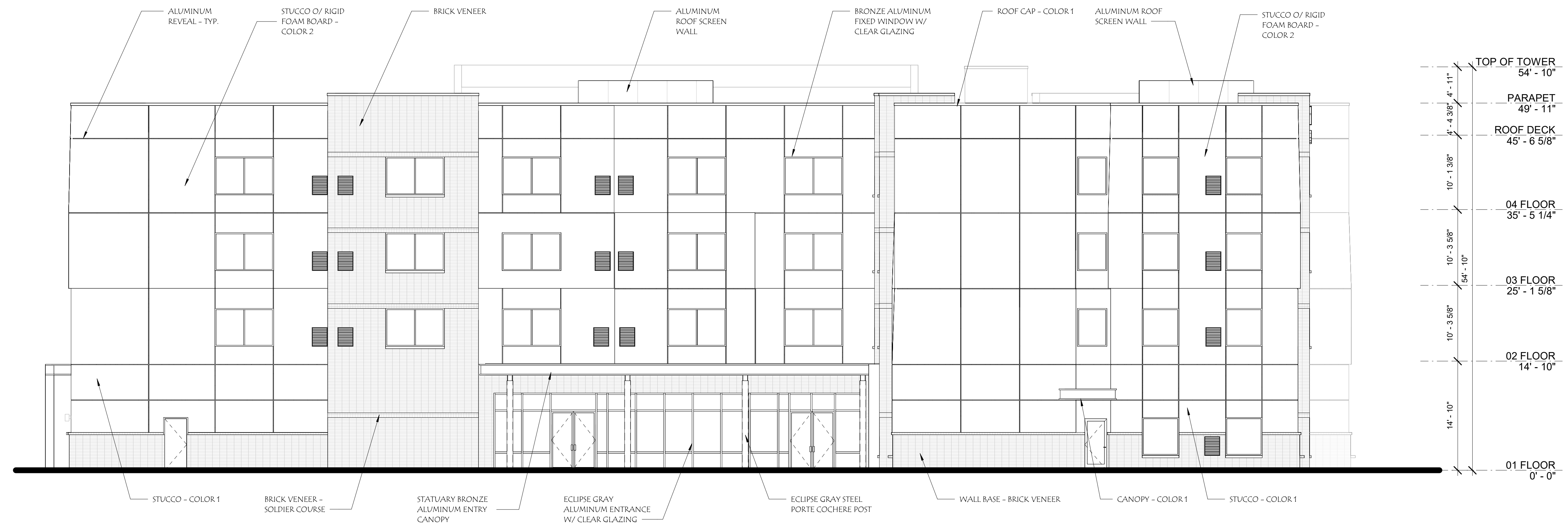
1 NORTH ELEVATION
1/8" = 1'-0"



2 WEST ELEVATION
1/8" = 1'-0"



1 SOUTH ELEVATION
1/8" = 1'-0"



2 EAST ELEVATION
1/8" = 1'-0"



① COLOR NORTH ELEVATION
1/8" = 1'-0"



② COLOR WEST ELEVATION
1/8" = 1'-0"

TOP OF TOWER
54' - 10"

PARAPET
49' - 11"

ROOF DECK
45' - 6 5/8"

04 FLOOR
35' - 5 1/4"

03 FLOOR
25' - 1 5/8"

02 FLOOR
14' - 10"

01 FLOOR
0' - 0"



① COLOR SOUTH ELEVATION
1/8" = 1'-0"



TOP OF TOWER
54' - 10"

PARAPET
49' - 11"

ROOF DECK
45' - 6 5/8"

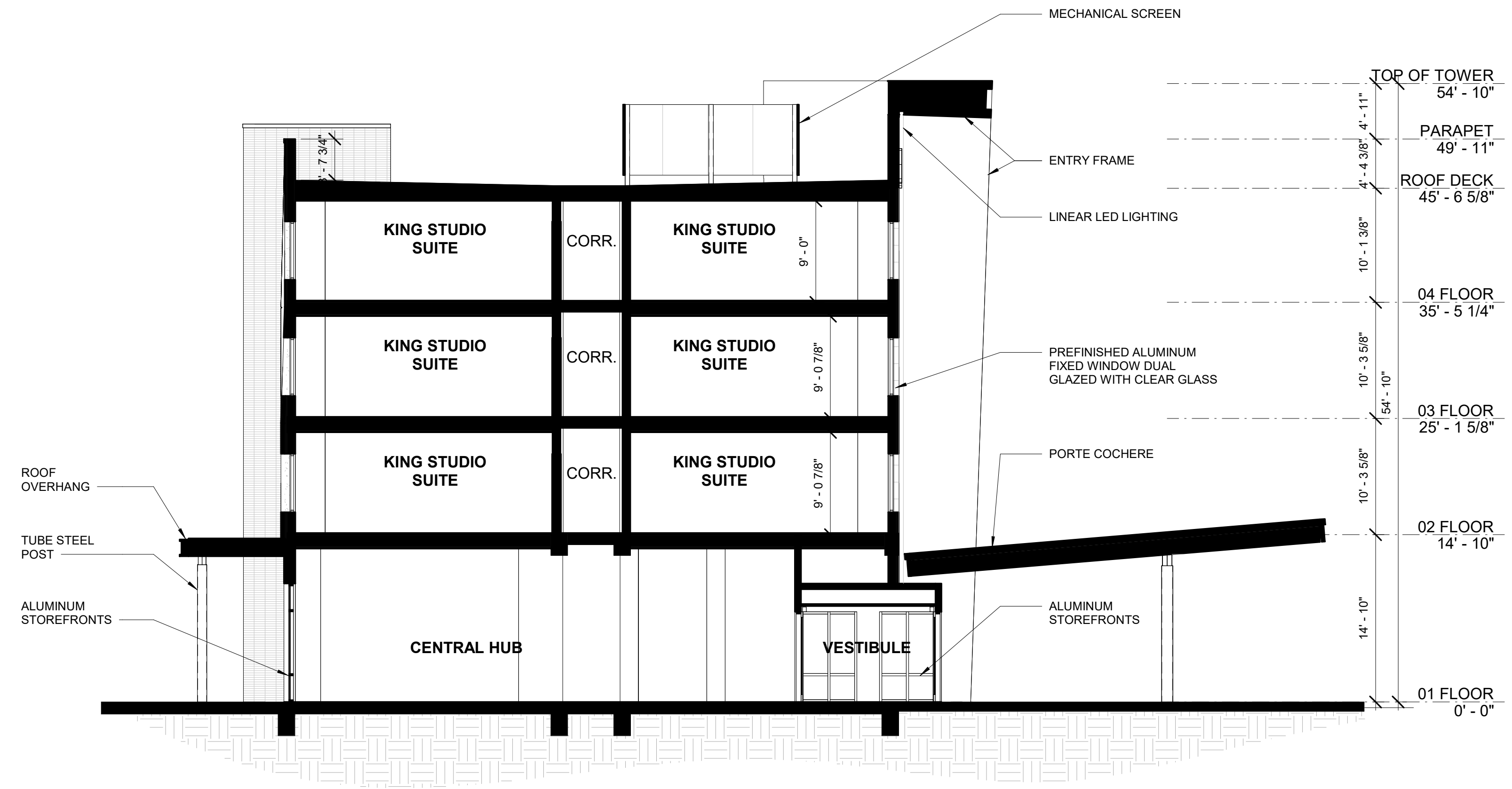
04 FLOOR
35' - 5 1/4"

03 FLOOR
25' - 1 5/8"

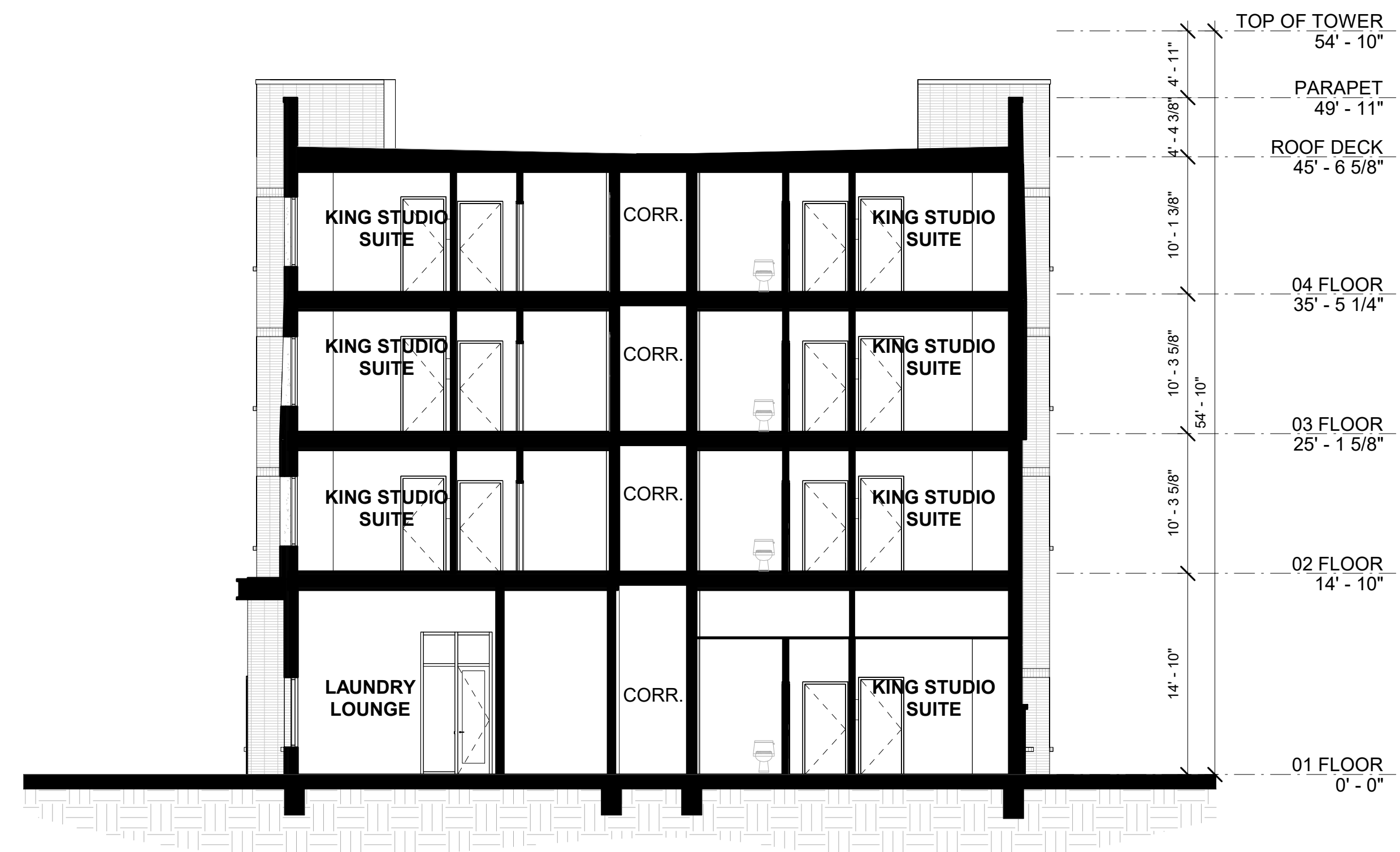
02 FLOOR
14' - 10"

01 FLOOR
0' - 0"

② COLOR EAST ELEVATION
1/8" = 1'-0"



① BUILDING SECTION K-L
1/8" = 1'-0"



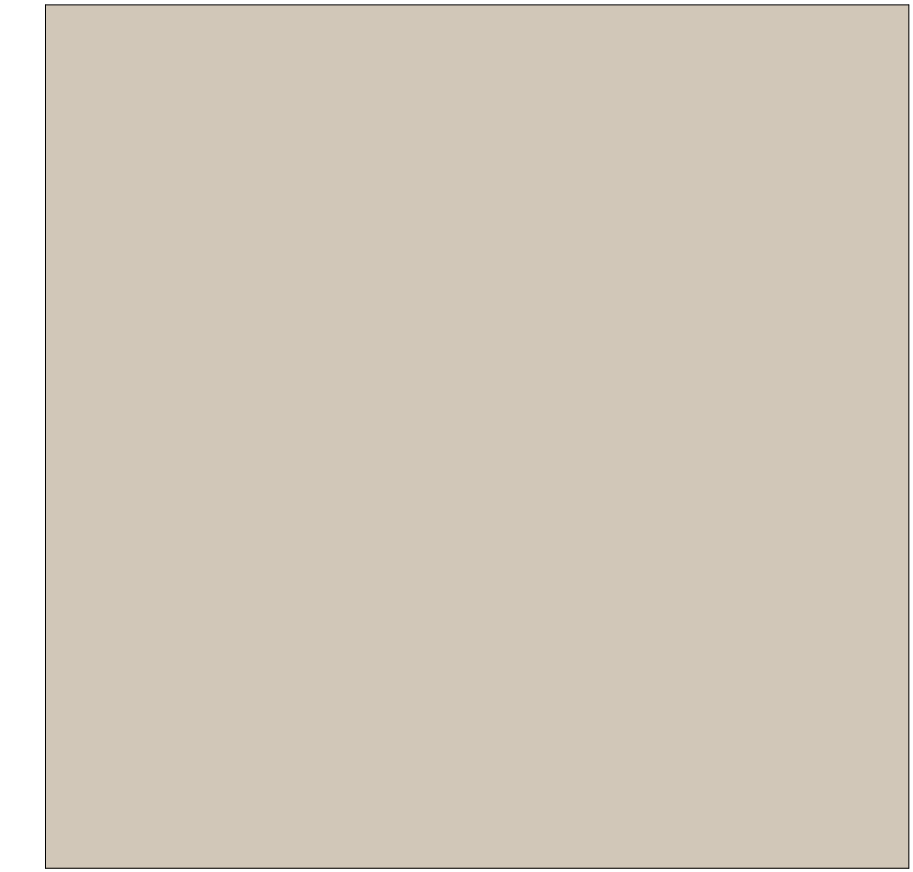
② BUILDING SECTION 16-17
1/8" = 1'-0"



ANODIZED ALUMINUM
PPG - PCNT28216
STATUARY BRONZE



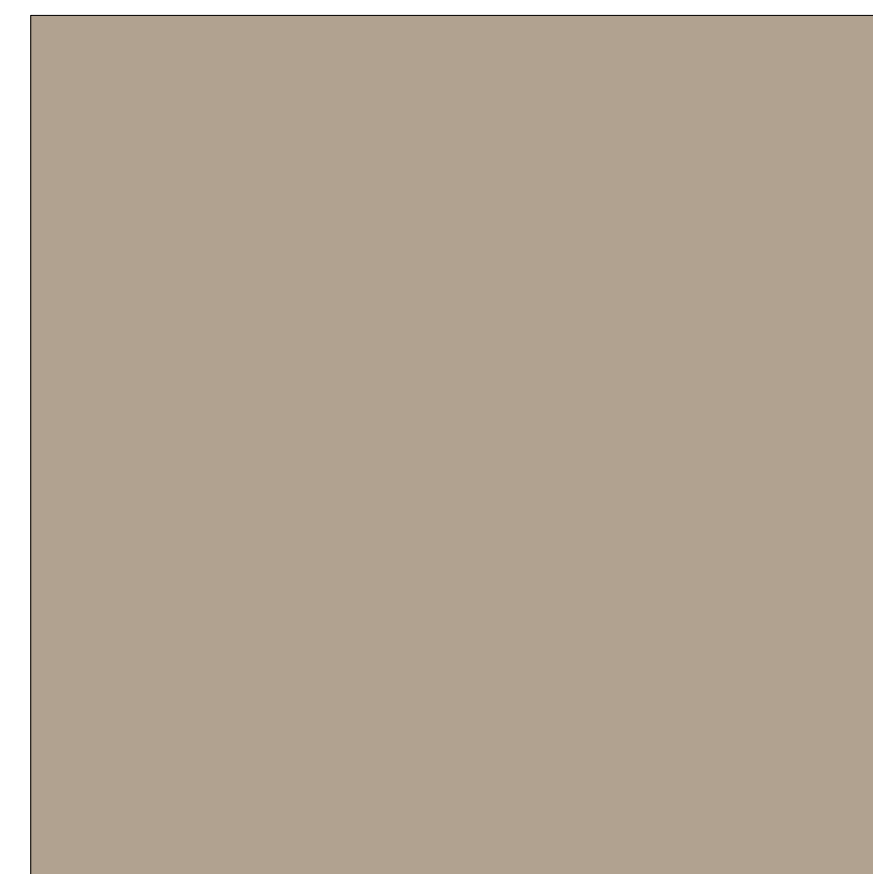
FIBER CEMENT CLADDING
NICHIHA
VINTAGEWOOD SPRUCE



CEMENT PLASTER
COLOR 1: SHERWIN-WILLIAMS
SW 7036 "ACCESSIBLE BEIGE"



BRICK VENEER
BELDEN BRICK
661 VELOUR



CEMENT PLASTER
COLOR 2: SHERWIN-WILLIAMS
SW 7038 "TONY TAUPE"



ANODIZED ALUMINUM
PPG - PCNT78163
ECLIPSE GRAY



① PERSPECTIVE - SOUTH/WEST



② PERSPECTIVE - SOUTH/EAST



① PERSPECTIVE - NORTH/WEST



② PERSPECTIVE - NORTH/EAST